



# CRASH Regatta

Challenging Racing and Social Happenings  
**Sidney North Saanich Annual Regatta**  
September 16th – 17th, 2023



## SAILING INSTRUCTIONS

*The notation '[DP]' in a rule in the SI means that the penalty for a breach of that rule may, at the discretion of the protest committee, be less than disqualification.*

### 1 RULES

- 1.1 The regatta will be governed by the rules as defined in *The Racing Rules of Sailing (RRS)*, the prescriptions of Sail Canada, the rules of PHRF-BC, and the applicable class rules.

### 2 NOTICES TO COMPETITORS

Notices to competitors will be posted on the official notice board at race headquarters on the bulletin board at SNSYC.

### 3 CHANGES TO SAILING INSTRUCTIONS

Any change to the sailing instructions will be posted before 0830 hrs on the day it will take effect, except that any change to the schedule of races will be posted by 2000 hrs on the day before it will take effect.

### 4 SIGNALS MADE ASHORE

- 4.1 Signals made ashore will be displayed from the flagstaff at SNSYC.  
4.2 When flag AP is displayed ashore, '1 minute' is replaced with 'not less than 30 minutes' in the race signal AP.

### 5 SCHEDULE of RACES

Fri, Sept 15	1600-1900 1800	Registration at SNSYC Burgers/salad dinner
Sat, Sept 16	0800-0900	Breakfast at SNSYC
	0900	Skippers meeting at SNSYC
	1030	Warning Signal for first race of the day
	1800	Dinner, music and daily prizes at SNSYC
Sun, Sept 17	0800-0900	Breakfast at SNSYC
	1030	Warning Signal for first race of the day No Warning Signals shall be made after 1500
	1600 approx	Prize giving at SNSYC

## **6 CLASS FLAGS**

6.1 Class flags will be as follows:

Multihulls	Code Flag "M"
PHRF 1	Numeral Pennant 1
PHRF 2	Numeral Pennant 2
PHRF 3	Numeral Pennant 3
PHRF 4	Numeral pennant 4 (if necessary)
PHRF 5	Numeral pennant 5 (if necessary)

6.2 Divisions assignments will be posted on the regatta notice board.

## **7 RACING AREA**

The racing area will be in the area bounded by Haro Strait, Moresby Passage, Coal Island, Sidney town and D'Arcy Island

## **8 THE COURSES**

8.1 Attachment A shows the locations of the rounding marks, the descriptions of the marks, the order in which they are to be passed, and the side on which they are to be left.

8.2 No later than the warning signal the race committee signal vessel will indicate/display the course to be sailed.

8.3 The course to be sailed will be identified by its corresponding course number on a display located on the stern or side of the race committee vessel.

## **9 MARKS**

9.1 Rounding marks may consist of navigational marks, islands, permanent club marks, or inflatable buoys. The inflatable Mark 1 is a yellow spherical buoy and the inflatable Mark 2 is an orange tetrahedral. Mark 3 is a yellow inflatable tetrahedral.

9.2 The starting marks will be the race committee boat, PT Trawler Europa 41, Northern Comfort, at the starboard end of the start line and an inflatable yellow cylinder at the port end.

9.3 The finishing marks will be a blue flag on the finish boat and a red cylinder buoy, all boats shall finish in the direction from the last mark.

## **10 START SEQUENCE**

10.1 The start sequence for the first race each day will be in the order noted in 6.1, or as announced on VHF 72 prior to the warning signal of the first race.

10.2 Multiple divisions may be started together at the discretion of the race committee.

10.3 After all classes have started one race, subsequent starts may be in any order.

## **11 THE START**

11.1 Races will be started using RRS 26, with a warning signal displayed 5 minutes before the starting signal for each class.

11.2 The starting line will be between a staff displaying an orange flag on the race committee vessel (starboard end of line) and an inflatable yellow cylinder at the port end of the line.

11.3 If any part of a boat's hull is on the course side of the starting line at her starting signal and she is identified, the race committee will attempt to hail her sail number or name. Failure to hail her number or name, failure of her to hear such a hail, or the order in which boats are hailed will not be grounds for redress. This changes RRS 62.1(a)

- 11.4 Boats whose warning signal has not been made shall avoid the starting area during the starting sequence for other races. [DP]
- 11.5 Several yellow marks may be attached to the start boat to protect it. These marks will be considered part of the start boat.

## **12 CHANGE OF THE NEXT LEG OF THE COURSE**

- 12.1 The posted course legs will not be changed.
- 12.2 The course may be shortened (finished) at any mark of the course as per RRS 32. A race committee boat shall take station nearby the mark and display code flag "S" and sound 2 horns to alert competitors.
- 12.3 In addition to the posted course marks, the race committee may shorten the course at any rounding mark by taking a position nearby and displaying code flag "S" per RRS 32.2. The RC will also announce the shortened course over the race information channel VHF 72.

## **13 THE FINISH**

- 13.1 The finishing line will be between a staff displaying a blue flag on M/V JOJO a Queenship 40, (the finish boat) and a red cylinder buoy and to be sailed through in the direction from the last mark.
- 13.2 The start and the finish line are obstructions and may not be sailed through other than when a boat is starting or finishing.

## **14 PENALTY SYSTEM**

- 14.1 For all classes RRS 44.1 is changed so that the Two-Turns Penalty is replaced by the One-Turn Penalty.

## **15 TIME LIMITS**

- 15.1 The time limit for each race is 3 hours, with the exception for course 17 and 18, which is 4 hours.
- 15.2 Boats not finishing within 30 minutes of the first boat in the same division that sails the course and finishes will be scored Did Not Finish without a hearing. This changes rule 35, A4 and A5.

## **16 PROTESTS AND REQUESTS FOR REDRESS**

- 16.1 Protest forms are available at race headquarters located in the foyer of the SNSYC.
- 16.2 For all boats, the protest time limit is 45 minutes after the Finish boat docks.
- 16.3 Protest hearing notices will be posted on the official notice board within 15 minutes following the protest time limit to inform competitors of hearings in which they are parties or named as witnesses. Hearings may be scheduled prior to the end of protest time if all the parties are available.
- 16.4 Notices of protests by the race committee or protest committee will be posted to inform boats under rule 61.1(b).
- 16.5 Protest hearings will be held upstairs at the SNSYC as quickly as possible and in the approximate order of receipt, beginning at the time announced on the hearing notice.

## **17 SCORING**

- 17.1 One race must be completed to constitute a series.
- 17.2 When four or less races have been completed, a boat's series score will be the total of her race scores.
- 17.3 When five or more races have been completed, a boat's series score will be the total of her race scores excluding her worst score.
- 17.4 PHRF-BC Time-On-Time calculations will be used for scoring divisions that are not one-design. Boats that are handicapped under PHRF-NW will be given a PHRF-BC rating for the event at no charge.

## **18 SAFETY REGULATIONS [DP]**

- 18.1 A boat that retires from a race shall notify the race committee as soon as possible.

## **19 TRASH DISPOSAL [DP]**

As sailors, we seek to protect and restore our oceans and coastal waters. See RRS 55. Trash must be contained on board and disposed of appropriately when back ashore. All garbage and recycling is to be deposited in the North Saanich Marina facilities provided.

## **20 RADIO COMMUNICATION**

A boat shall neither make radio transmissions while racing nor receive radio communications not available to all boats. This restriction also applies to mobile telephones. The Race Committee will be providing race information on **VHF Channel 72**.

## **21 PRIZES**

Prizes will be awarded at SNSYC following the final race of the event.

## **22 DISCLAIMER OF LIABILITY**

Competitors participate in the regatta entirely at their own risk. See RRS 4, Decision to Race. The organizing authority will not accept any liability for material damage or personal injury or death sustained in conjunction with or prior to, during, or after the regatta

**Skippers meeting will be at 0900, Saturday, September 16<sup>th</sup> at SNSYC**  
*All competitors are encouraged to attend*

## Attachment “A” - Course Descriptions

### Southerly Wind

Distances in nautical miles

Course ID #	Marks to Round	Course Distance
10	Start, U2 to port, Finish	4.0
11	Start, U2 to <b>port</b> , Mark 3 to port, U2 to port, Finish	6.9
12	Start, U2 to <b>port</b> , Ker Island Mark to <b>port</b> , Mark 3 to port, Finish	6.5
13	Start, Saanichton Barge Buoy to <b>port</b> , Finish	7.0
14	Start, Saanichton Barge Buoy to <b>port</b> , red buoy U6 to <b>starboard</b> , Ker Island Mark to <b>port</b> , Mark 3 to port, Finish	9.2
15	Start, James Island Mark to port, Mark 3 to port, James Island mark to port, Finish	8.0
16	Start, James Island Mark to <b>port</b> , Ker Island Mark to <b>port</b> , Mark 3 to port, Finish	7.0
17	Start, D’Arcy Shoals Buoy U1 to <b>port</b> , Finish	11.5
18	Start, James Island to port, D’Arcy Shoals Buoy U1 to port, Finish	12.1

### Westerly Wind

20	Start, red buoy U6 to <b>port</b> , Sidney Spit Mark to <b>port</b> , Mark 3 to port, Finish	3.1
21	Start, red buoy U6 to <b>starboard</b> , Ker Island Mark to <b>starboard</b> , Sidney Spit Mark to <b>port</b> , Mark 3 to port, Finish	4.0
22	Start, red buoy U6 to <b>port</b> , South Cod Reef Buoy to <b>port</b> , Mark 3 to port, Finish	7.1
23	Start, red buoy U6 to <b>port</b> , James Island mark to <b>port</b> , Sidney spit mark to <b>port</b> , Mark 3 to port, Finish	6.3
24	Start, red buoy U6 to <b>port</b> , Saanichton Barge Buoy to <b>port</b> , Sidney Spit Mark to <b>port</b> , Mark 3 to port, Finish	8.8

### Easterly Wind

30	Start, Sidney Spit Mark to <b>port</b> , Finish	1.6
31	Start, Sidney Spit Mark to <b>port</b> , Ker Island Mark to <b>port</b> , Sidney Spit Mark to <b>port</b> , Finish	4.4
32	Start, Sidney Spit Mark to <b>port</b> , red buoy U6 to <b>port</b> , Sidney Spit Mark to <b>port</b> , Finish	4.6
33	Start, South Cod Reef Buoy to <b>port</b> , Finish	5.4
34	Start, Sidney Spit Mark to <b>port</b> , James Island Mark to <b>port</b> , Sidney Spit to <b>port</b> , Finish.	6.1
35	Start, Sidney Spit Mark to <b>port</b> , Saanichton Barge Buoy to <b>port</b> , Sidney Spit Mark to <b>port</b> , Finish	9.2

### Northerly Wind

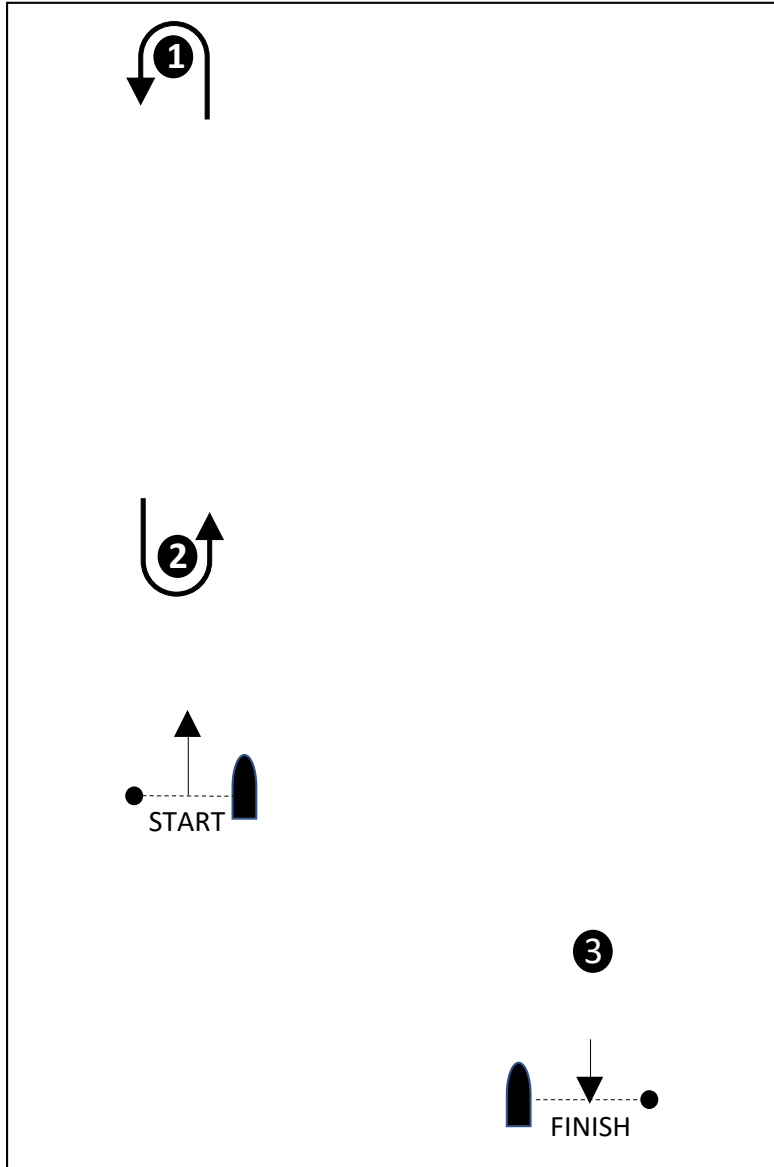
40	Start, Ker Island Mark to <b>port</b> , Finish	1.7
41	Start, Ker Island Mark to <b>port</b> , Mark 3 to port, Ker Island Mark to port, Finish	5.2
42	Start, Ker Island Mark to <b>port</b> , U6 to <b>port</b> , Ker Island Mark to port, Finish	6.7
43	Start, Ker Island Mark to <b>port</b> , Sidney Spit Mark to <b>starboard</b> , James Island Mark to <b>starboard</b> , Ker Island Mark to <b>port</b> , Finish	9.2
44	Start, Ker Island Mark to <b>port</b> , Saanichton Barge Buoy to <b>port</b> , Ker Island Mark to <b>port</b> , Finish	9.7

### ROUND The BUOYS

50	Start, Mark 1 to port, Finish.	TBD
51	Start, Mark 1, 2, 1 all to port, Finish	
52	Start, Mark 1, 2, 1, 2, 1, all to port, Finish	

\*Courses distances will vary according to position of start line and finish line

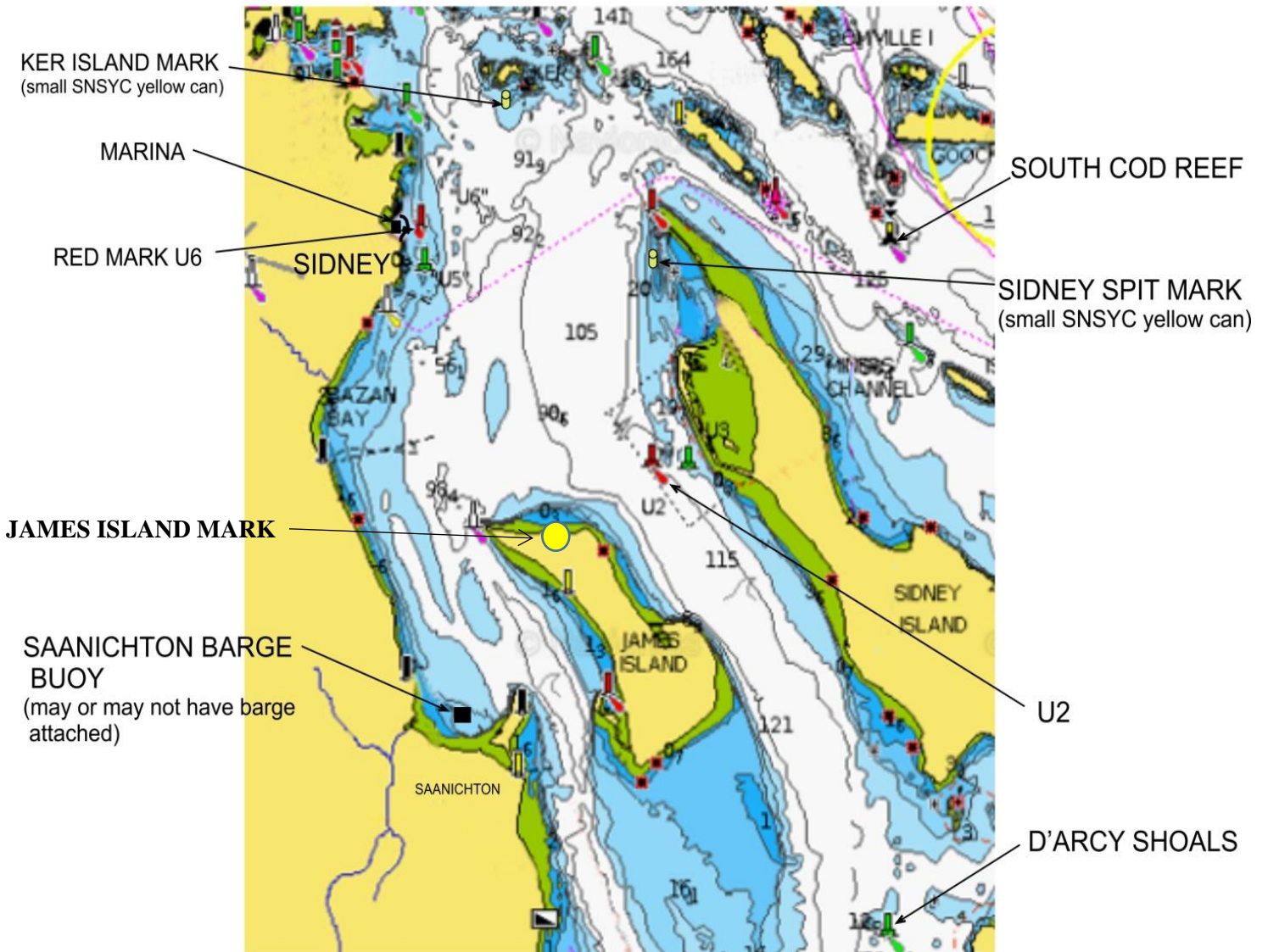
## Course Diagram




<i>Course ID</i>	<i>Round the Buoys Course to Sail</i>
50	Start – 1 - Finish
51	Start – 1 – 2 – 1- Finish
52	Start – 1 – 2 – 1 – 2 – 1 - Finish

Mark **3** is not a mark of the course for the Round the Buoys courses

## MARK LOCATIONS



All marks are navigational marks except:

Ker Island Mark - private SNSYC yellow buoy at N 48°40.00; W 123°22.42	
Sidney Spit Mark - private SNSYC yellow buoy at N 48°39.06; W 123°20.80	
James Island Mark - private SNSYC yellow buoy at N 48°37.19'; W 123°21.75'	
Saanichton Barge Buoy - private barge buoy, may have barge attached, at N 48°35.82; W 123°22.86	